

# Containment Ponds

Compass Geomatics has experience with both pre and post construction containment pond surveys. We utilize state of the art equipment and software to ensure accurate and reliable volume and grade verification.

How can Compass ensure your project moves in **The Right Direction?**

## The Right Choice

### \* Maximize Hydrographic Survey Efficiencies

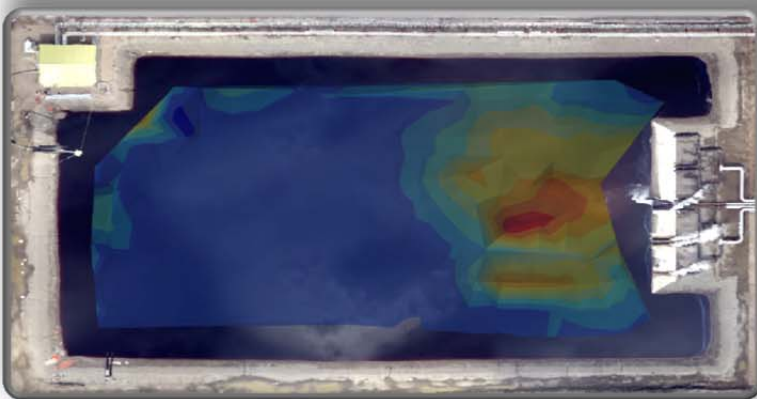
The Compass RC-Boat is an entirely new option for shallow water hydrographic surveying. Get bathymetry data where conventional methods are not practical or safe; avoid mobilizing a workboat or conducting hazardous and time-consuming wading measurements.

### \* Intrinsically Safe

With the haul and protruding connections sealed and the internal 24VDC battery connections water resistant the Compass RC-Boat is intrinsically safe for use in hazardous areas.

### \* Professional Results With No Compromises

The Compass RC-Boat is equipped with a dual frequency echo sounder 33/200kHz CEESCOPE which offers PPS time stamped data, integrated GNSS, a full water column echo envelope record and provides robust shallow water performance.



[compassgeomatics.ca](http://compassgeomatics.ca)

1.855.356.0111

**COMPASS**  
Geomatics Ltd.