

# River Crossings

Compass Geomatics has extensive experience surveying water crossings throughout Western Canada. We understand the permit and regulatory requirements and provide our client's with Depth-of-Cover, Water Crossing Inspections and full Bathymetric Surveys.

## How can Compass ensure your project moves in **The Right Direction?**

### The Right Choice

- \* We collect, record and archive data for use in yearly crossing inspections and comparisons as per AER requirements.
- \* Access to real time data of water levels and environmental constraints assists our crews in working safely and efficiently.
- \* Our fully equipped unmanned RC boats have the latest sounding and positioning equipment.



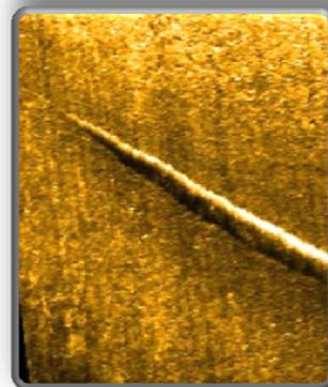
### Depth of Cover-Plan & Profile

- \* Pipe Depth
- \* Thalweg/Scour Potential
- \* Cross Sections
- \* Topographic



### 3D Photos of Crossing

- \* UAV Imagery over 3D Data Set
- \* Side Scan Imagery over 3D Data Set



### Safety

- \* Intrinsically Safe
- \* Safe Mobilization and Recovery

### Boat Specifications

- \* Dual Frequency Echo Sounder
  - \* Accuracy
  - \* 200 kHz – 0.01 m +/- 0.1% depth
  - \* 33 kHz – 0.10 m +/- 0.1% depth
- \* Side Scan Sonar
- \* Trimble RTK GPS

